

A little about our park ...

Kishacoquillas Park (formerly Derry Township Community Park) went into operation in 1974. *The original name of the Park was readopted in 2013 to honor its long heritage and history in Mifflin County.*

The park provides recreation facilities to the surrounding community. It is located along beautiful Kishacoquillas Creek.

In addition to 9 large Picnic Pavilions (available by reservation at nominal fees), there is a playground, Mini Golf course and a mile long walking trail.

The park is home to several area Pony League, Little League and Pee Wee Football fields.

NEW...

DOG PARK LOCATED IN PARK

OUR CAMPGROUND IS ONLY:

30 minutes from the

**PENN STATE UNIVERSITY
MAIN CAMPUS
STATE COLLEGE, PA**

AND

only 60 miles from

HARRISBURG, PA.

DIRECTIONS TO FIND US:

From State College, Take US Hwy 322 East, take the Burnham/Yeagertown Exit. At Stop sign, make a left turn onto West Freedom Ave. Continue through two lights and make a right at the next light onto Logan Blvd. Continue about 1/4 mile, Park is on the left.

From Harrisburg, Take US Hwy 322 West. Take the Burnham/Yeagertown Exit. Make a right at Stop sign. Make a left at light onto West Freedom Ave. Continue through first light and make a right at the next light onto Logan Blvd. Continue about 1/4 mile, Park is on the left.

**KISHACOQUILLAS PARK
IS LOCATED AT :**

**1 DERRY PARK DRIVE
LEWISTOWN, PA 17044**

**MAILING ADDRESS:
DERRY TOWNSHIP
73 RESERVE LANE
LEWISTOWN, PA 17044**

**Phone: 717-248-8151
Fax: 717-248-0063
Email: kishpark@derrytwp.info
Website: www.derrytwp.info**


**KISHACOQUILLAS
PARK**

**FORMERLY
DERRY TOWNSHIP
COMMUNITY PARK**



Tel: 717-248-8151

Email:
kishpark@derrytwp.info

www.derrytwp.info

Welcome To The Campground At Kishacoquillas Park



Our park offers level campsites ranging from basic tent sites to full water, sewer, electric and A/C hook-ups.

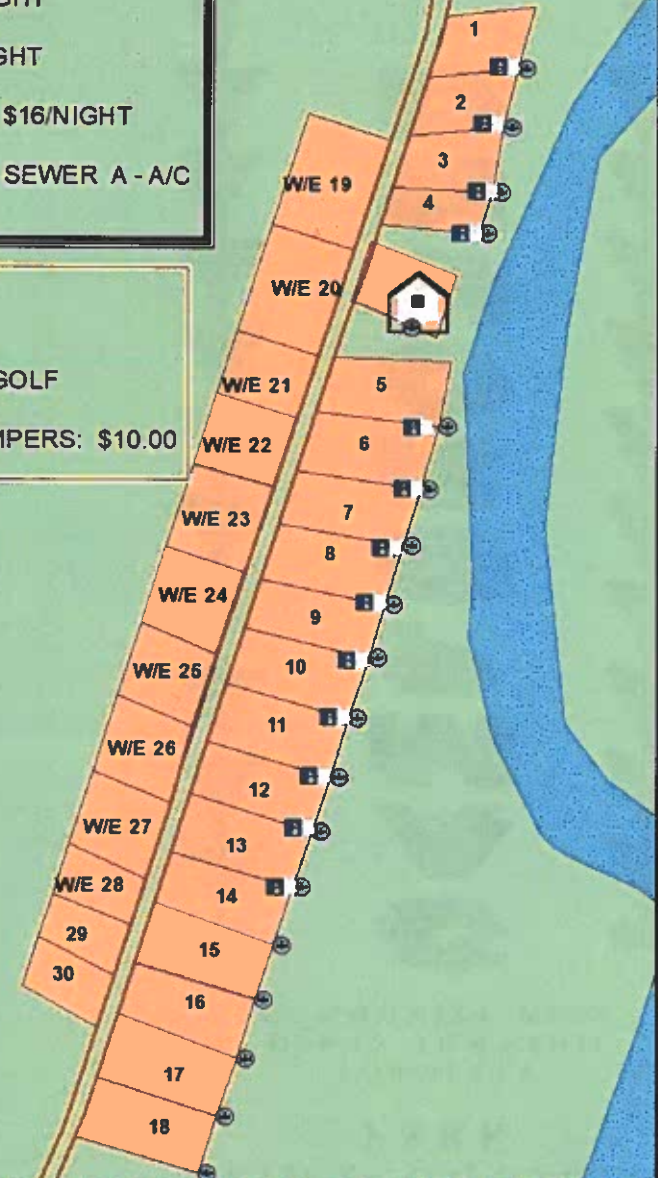
- * All sites are on a first come, first serve basis.
- * Each Site has a picnic table & fire ring.
- * Public restrooms w/showers are conveniently located.
- * Firewood is available for \$20.00 delivered to site or \$10.00 at Mini Golf.
- * Pets are allowed, however they must be leashed at all times.
- * Alcoholic beverages are prohibited in all areas of the Park .
- * Our Park is a Tobacco-Free Facility.

KISH PARK CAMPSITES

SITES: 1 - 13 WSEA \$30/NIGHT
 SITES: 14 - 18 W \$20/NIGHT
 SITES: 19 - 28 WE \$25/NIGHT
 SITES: 29 - 30 NO HOOKUPS \$16/NIGHT
 W - WATER E - ELECTRIC S - SEWER A - A/C

FIREWOOD -
 \$20.00 DELIVERED TO SITE
 \$10.00 WAGONLOAD AT MINI GOLF
 DUMP STATION FEE/NON-CAMPERS: \$10.00

	Sub-electric data
	Water
	Bath_House
	walking_trail
	railroad
	roads
	hydrography
	camp_area
	surface_water
	municipal boundary



ALL CAMPING IS FIRST COME/FIRST SERVE